

DEC 10 1914

I



©CLF 26905

**WATER FACILITIES** :- Privately owned, gravity system. A 30,000 gal. tank fed by two 3" pipes from a mountain stream, one mile N.E. of town & elev. about 150', supply in cold weather adequate. An 8" reduced to 6", wood stave pipe conveys water to town. 2 miles of mains, all wood. System installed 1904. - 13 two way hydr. - 75 lbs. pressure.

**FIRE DEPT.** :- Volunteer, 40 men & chief. - One 40 gal. them. - One hose cart & 500 hose. - no extra hose. - One village H. & L. truck. - One bucket cart. 3 fire alarm bells. No city limits. - No fire limits. - Grades: easy.

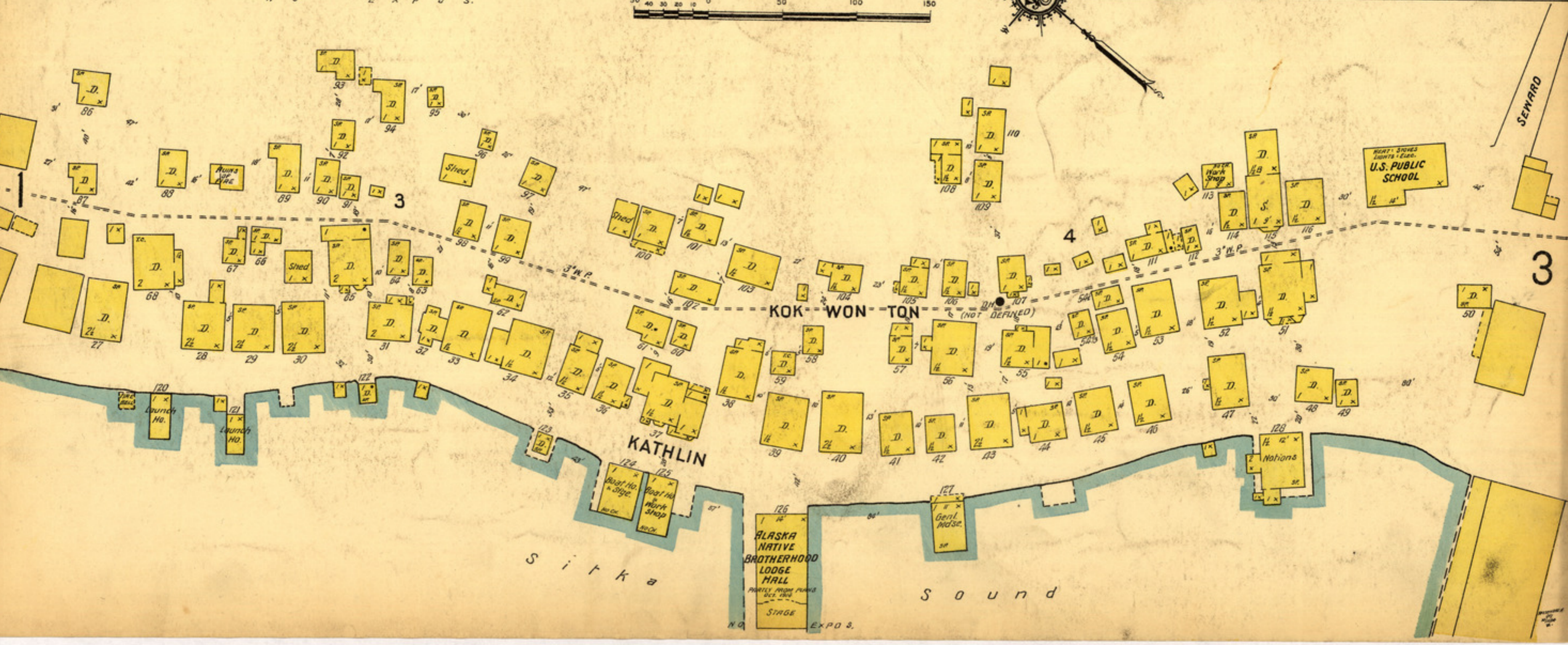
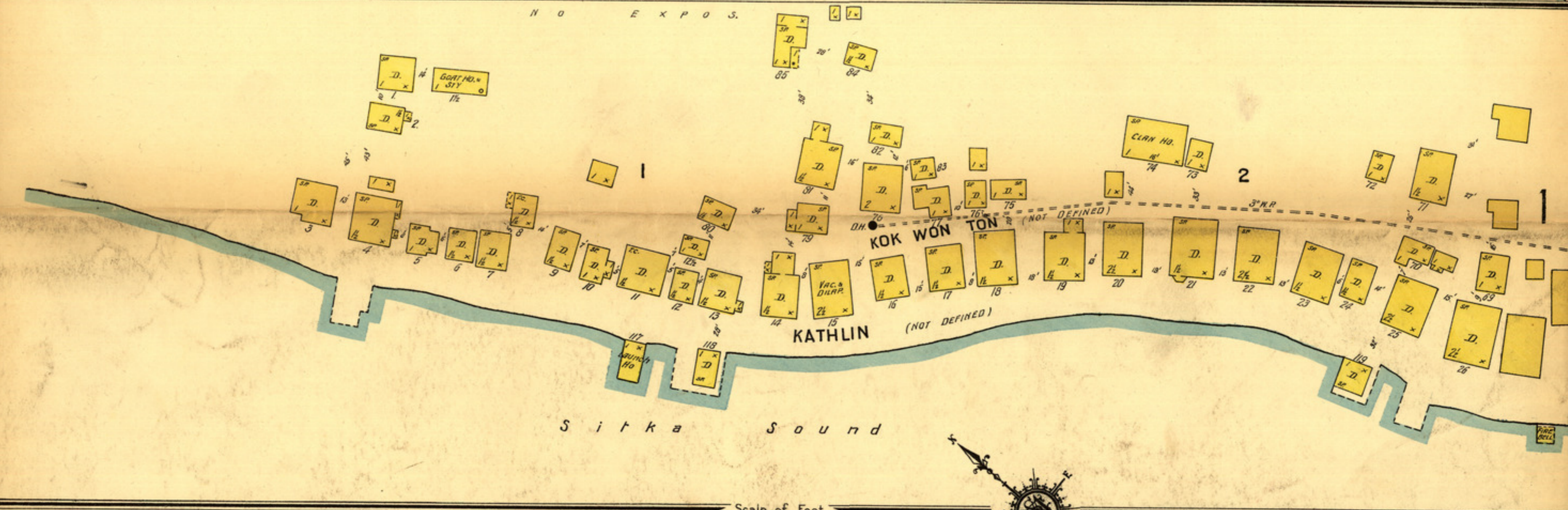
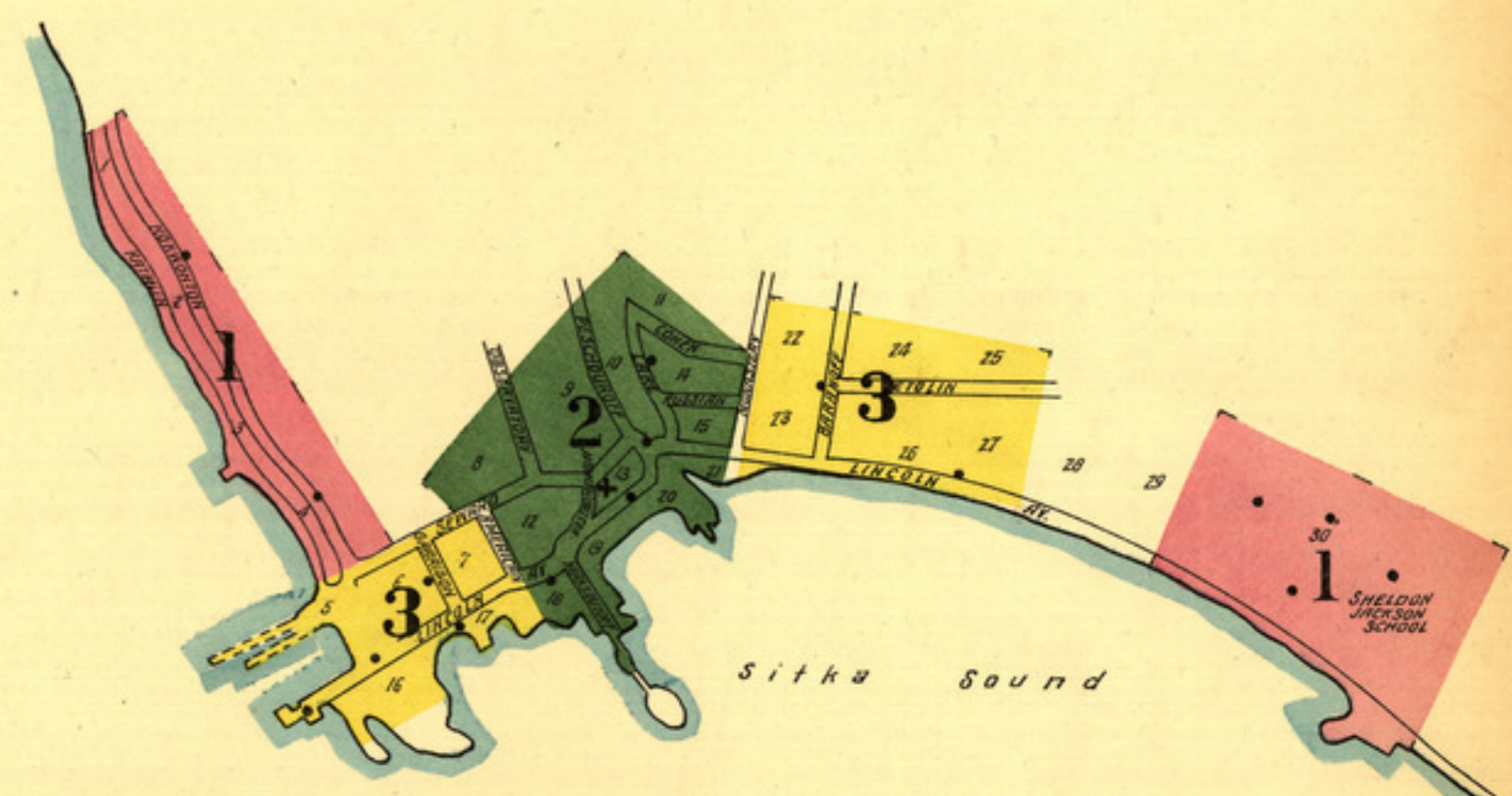
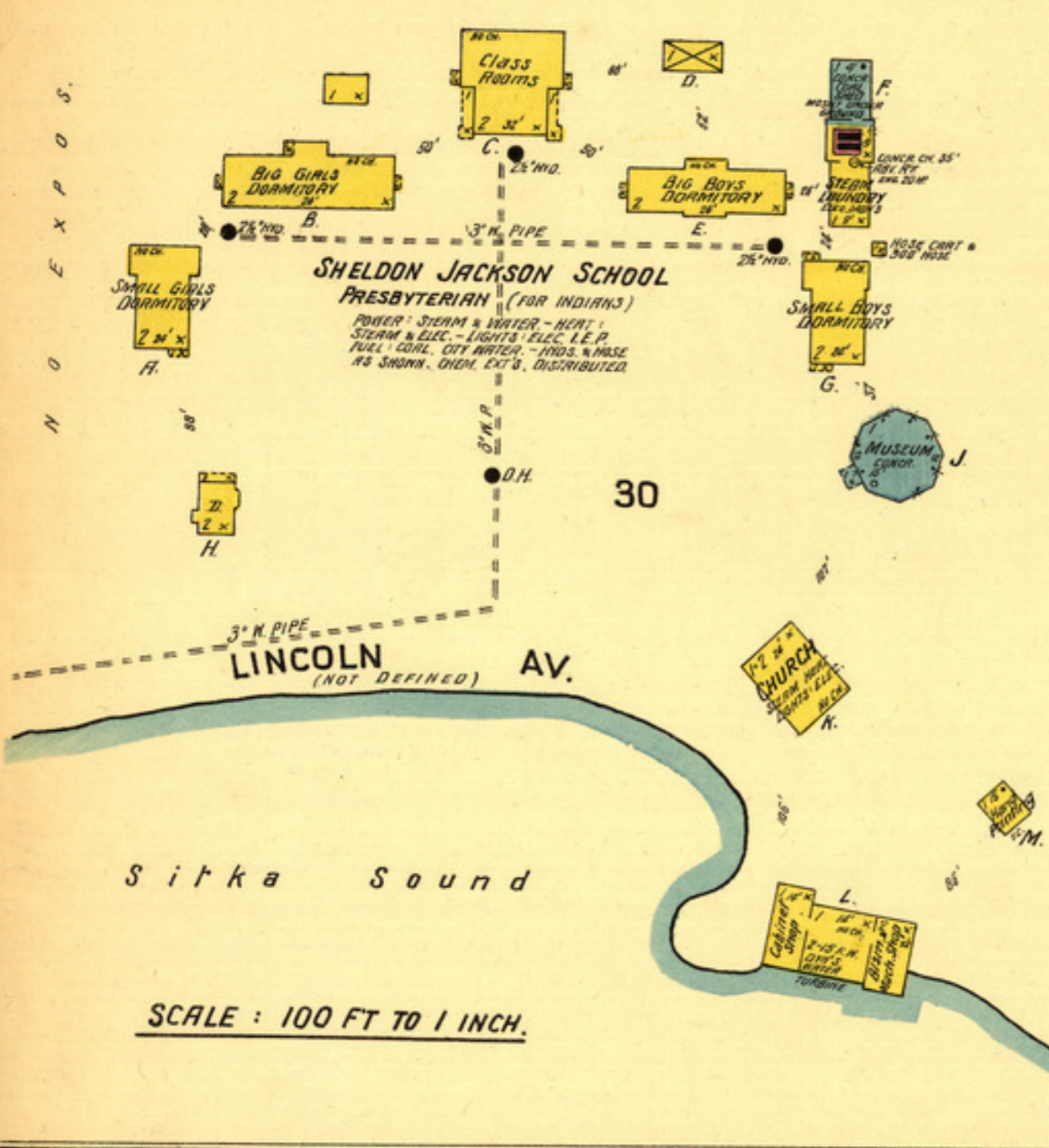
**NOTE:**

MANY OF THE BUILDINGS ARE VERY OLD BUT SUBSTANTIAL. SOME, BUILT DURING THE RUSSIAN OCCUPATION ARE OF HEAVY LOGS, (EVEN THE PARTITIONS), SIDED OUTSIDE, AND WILL OUTLAST MANY OF RECENT CONSTRUCTION. IN THE INDIAN VILLAGE (SHEET NO. 1), THE BUILDINGS AND CONTENTS COMPARE FAVORABLY WITH THOSE OCCUPIED BY THE WHITES. THE INDIANS ARE PROSPEROUS AND HAVE INVESTED SURPLUS FUNDS IN LIFE INSURANCE, GOOD LAUNCHES, ETC.

**KEY**

---	FIRE WALL IN ANY ROOF
---	METAL CORNICE
---	FIRE WALL IN ANY ROOF
---	WOOD CORNICE
---	FRAME PARTITION
---	OPENING WITH IRON DOOR
---	STANDARD
---	IRON DOOR
---	WINDOWS & IRON SHUTTERS
---	WINDOW 1 1/2 STORY
---	WINDOW 1 1/2 3/4 STORY
---	2 1/2 & 4 1/2 "
---	STABLE
---	BUILDINGS COLORED YELLOW ARE FRAME
---	RED BRICK
---	BLUE STONE
---	GRAY IRON
---	BROWN ADOBÉ
---	BUFF FIRE PROOF

(S) INDICATE RELATIVE HEIGHTS  
 \* FIRE STATION, AS SHOWN ON KEY MAP  
 ALTERNATE STREET NUMBERS ARE ACTUAL  
 CONSECUTIVE STREET NOS ARE ARBITRARY





NO EXA. VEANT BEYOND.

Pond

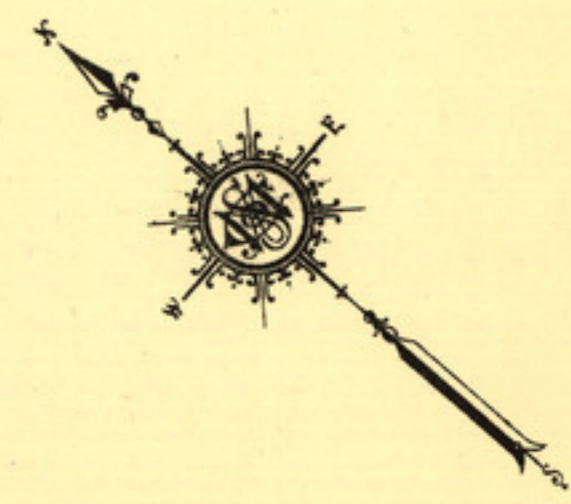
LAKE  
(NOT DEFINED)

SITKA STEAM LAUNDRY  
PAPER - STEAM - FUEL - CORN.  
LIGHTS & HEAT - ELEC. CITY WATER.

W.P. MILLS & CO'S SAW MILL  
POWER - STEAM - FUEL - MILL REFUSE - LIGHTS - ELEC.  
NO FIRE APPARATUS.

Sound

S i t k a



Scale of Feet.  
50 100 150

OBSERVATORY

AMERICAN

BARRANOFF HOTEL

RUSSIAN ORTHODOX CHURCH

MAKSOUTOFF

11

14

3

10

15

21

9

13

20

8

12

19

3

18

OCT. 1914  
SITKA  
ALASKA

