



City and Borough of Sitka Assembly Meeting

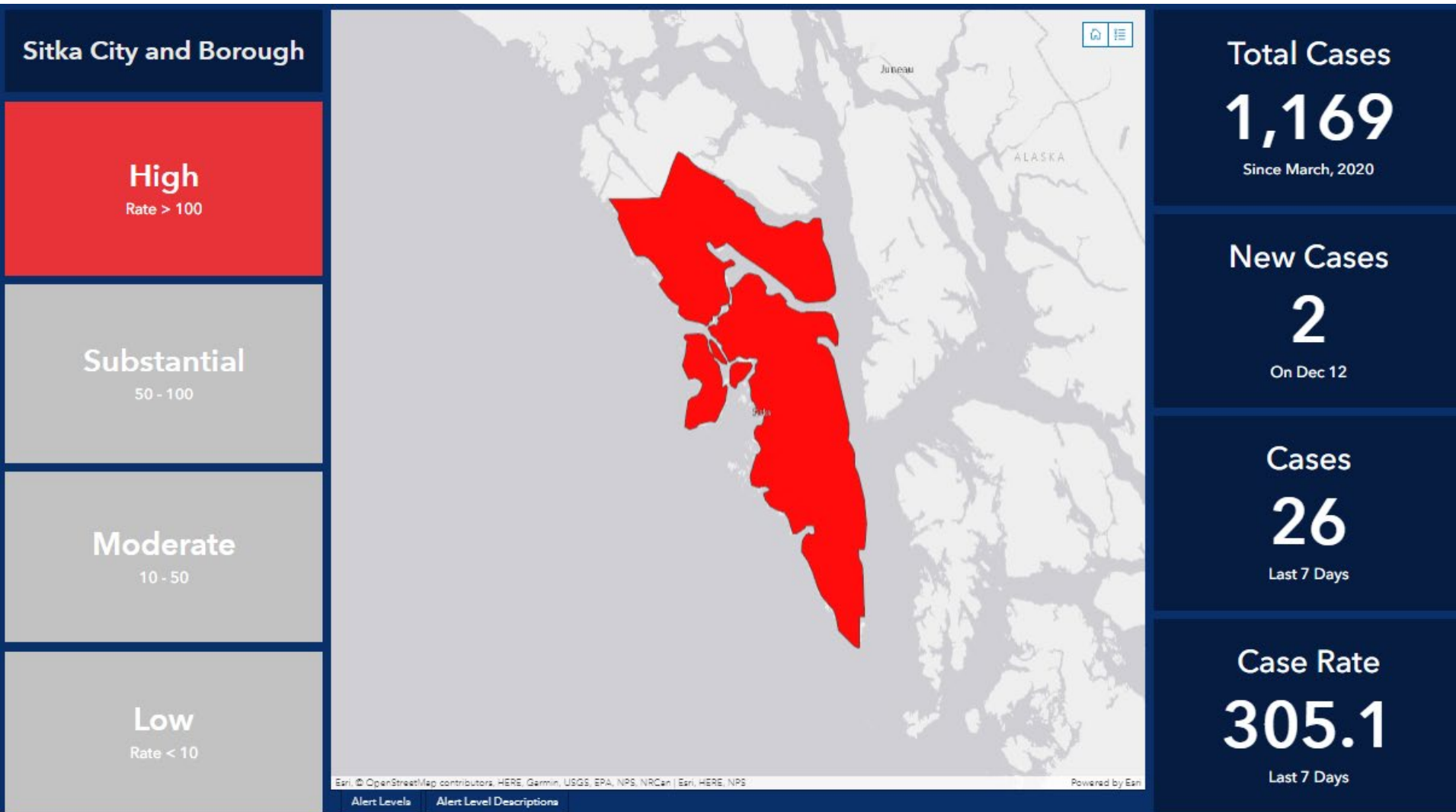
Dr. Anne Zink, Chief Medical Officer

December 14, 2021



COVID-19 Cases, Hospitalizations, Deaths - Sitka

December 12, 2021

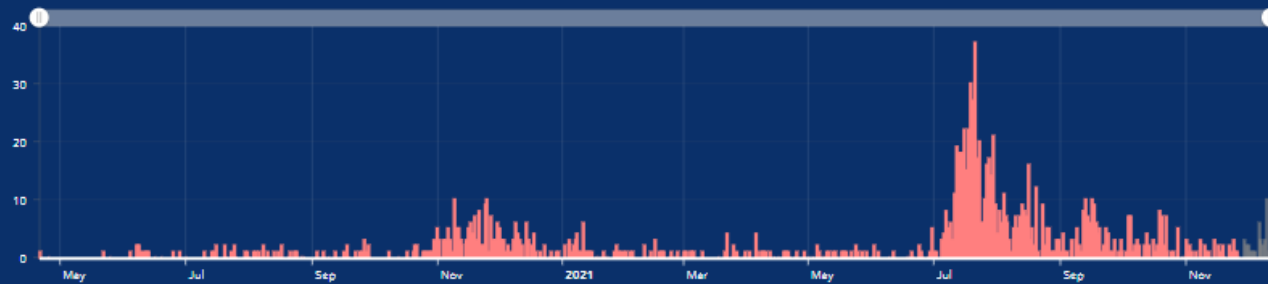


<https://alaska-coronavirus-vaccine-outreach-alaska-dhss.hub.arcgis.com/>

COVID-19 Cases, Hospitalizations, Deaths - Sitka

December 12, 2021

COVID-19 Cases by Day



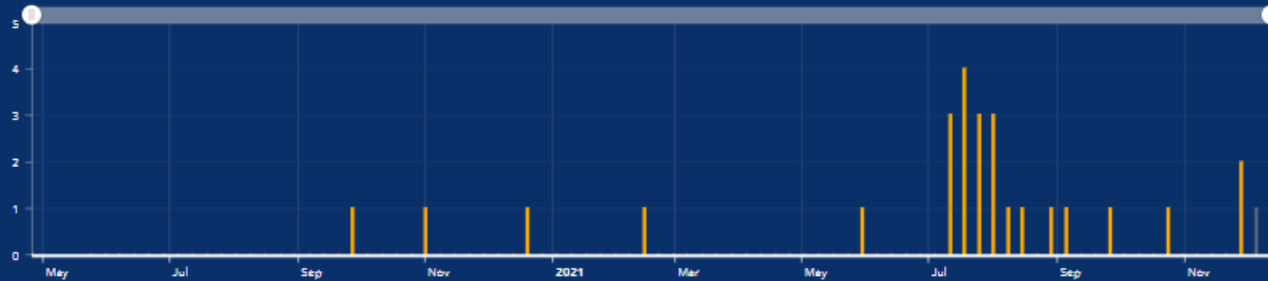
Cases

1,169

[Count](#)

[Details](#)

COVID-19 Hospitalizations by Week



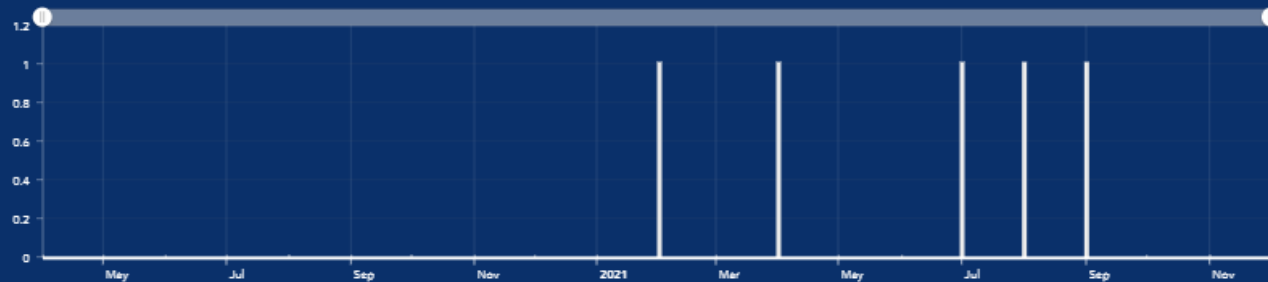
Hospitalizations

27

[Count](#)

[Details](#)

COVID-19 Deaths by Month



Deaths

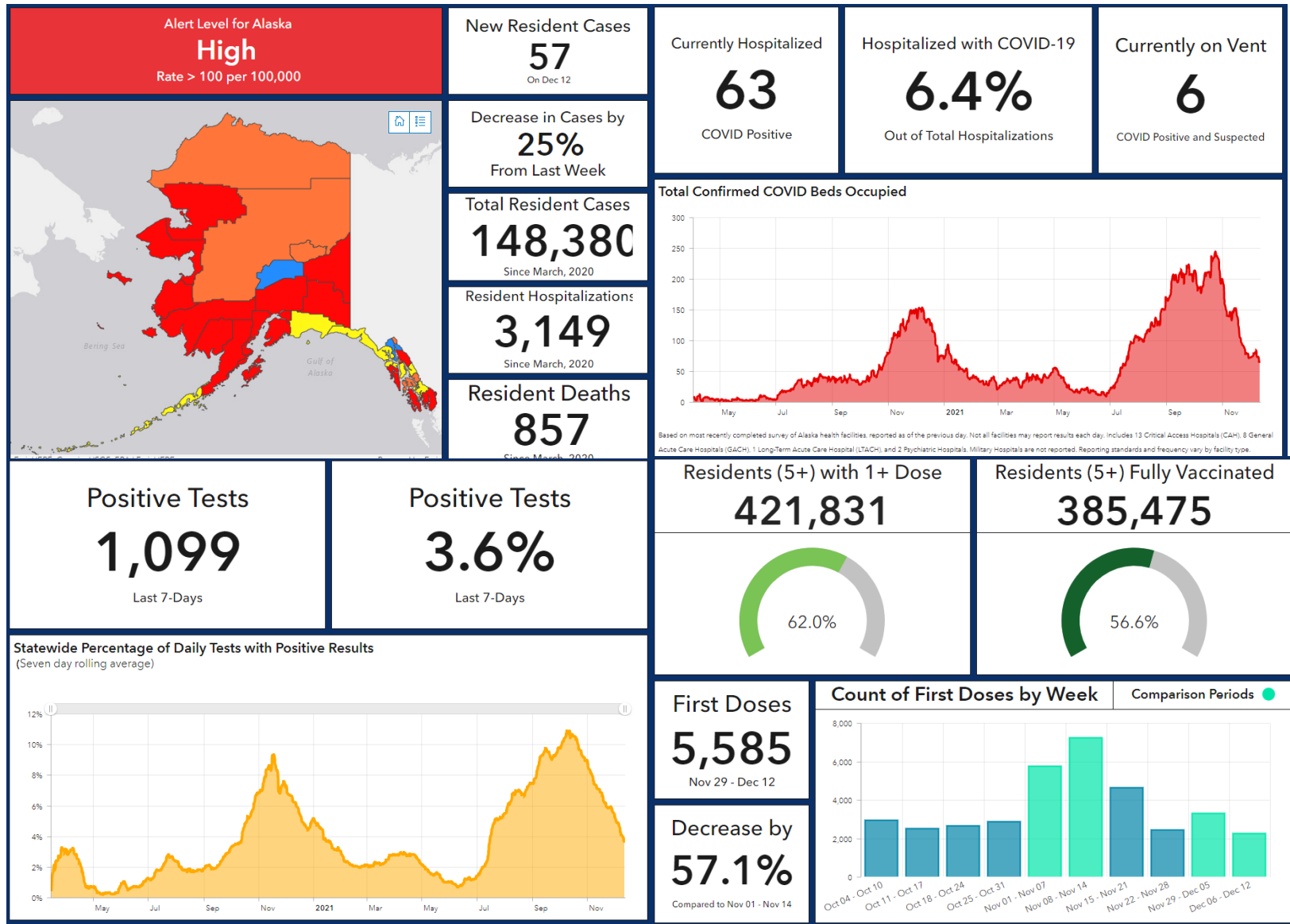
5

[Count](#)

[Details](#)

COVID-19 Update: Alaska

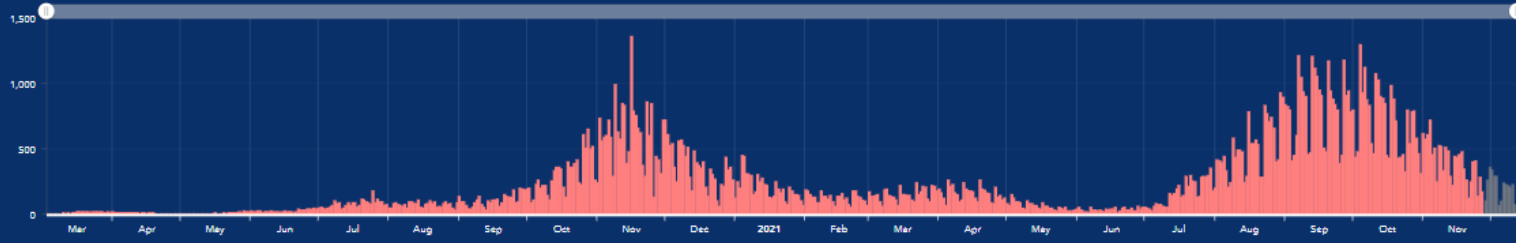
December 12, 2021



COVID-19 Cases, Hospitalizations, Deaths - Alaska

December 12, 2021

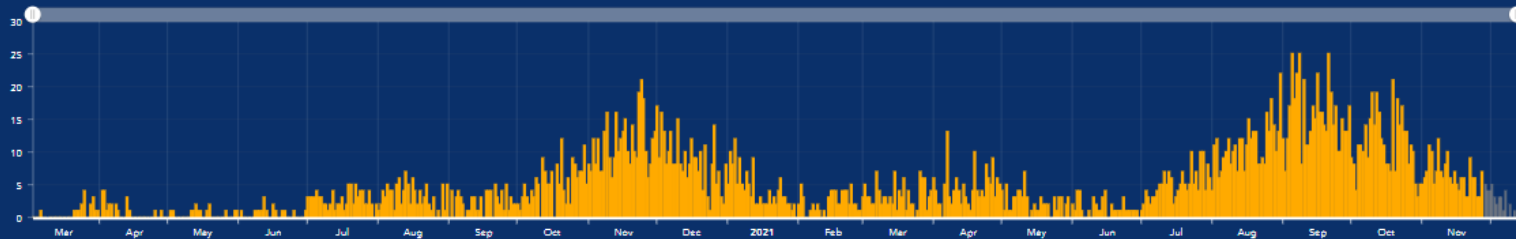
COVID-19 Cases by Day



Cases
❤️ 148,380

[Count](#) [Details](#)

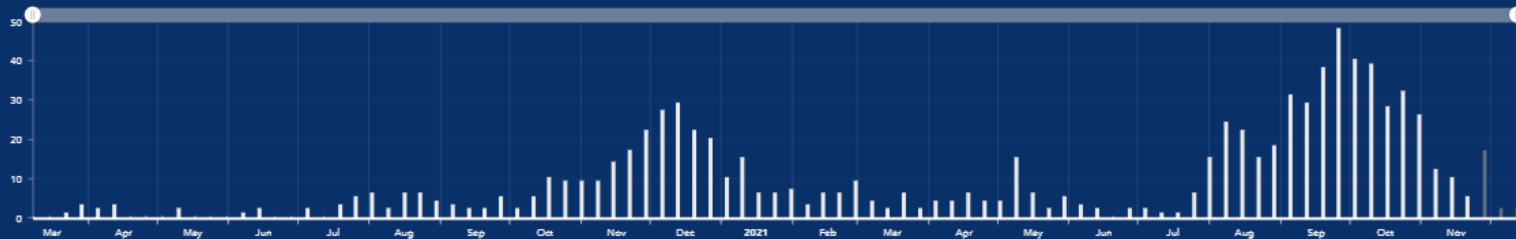
COVID-19 Hospitalizations by Day



Hospitalizations
✳️ 3,149

[Count](#) [Details](#)

COVID-19 Deaths by Week



Deaths
❀ 857

[Count](#) [Details](#)

COVID-19 Cases – United States

December 14, 2021

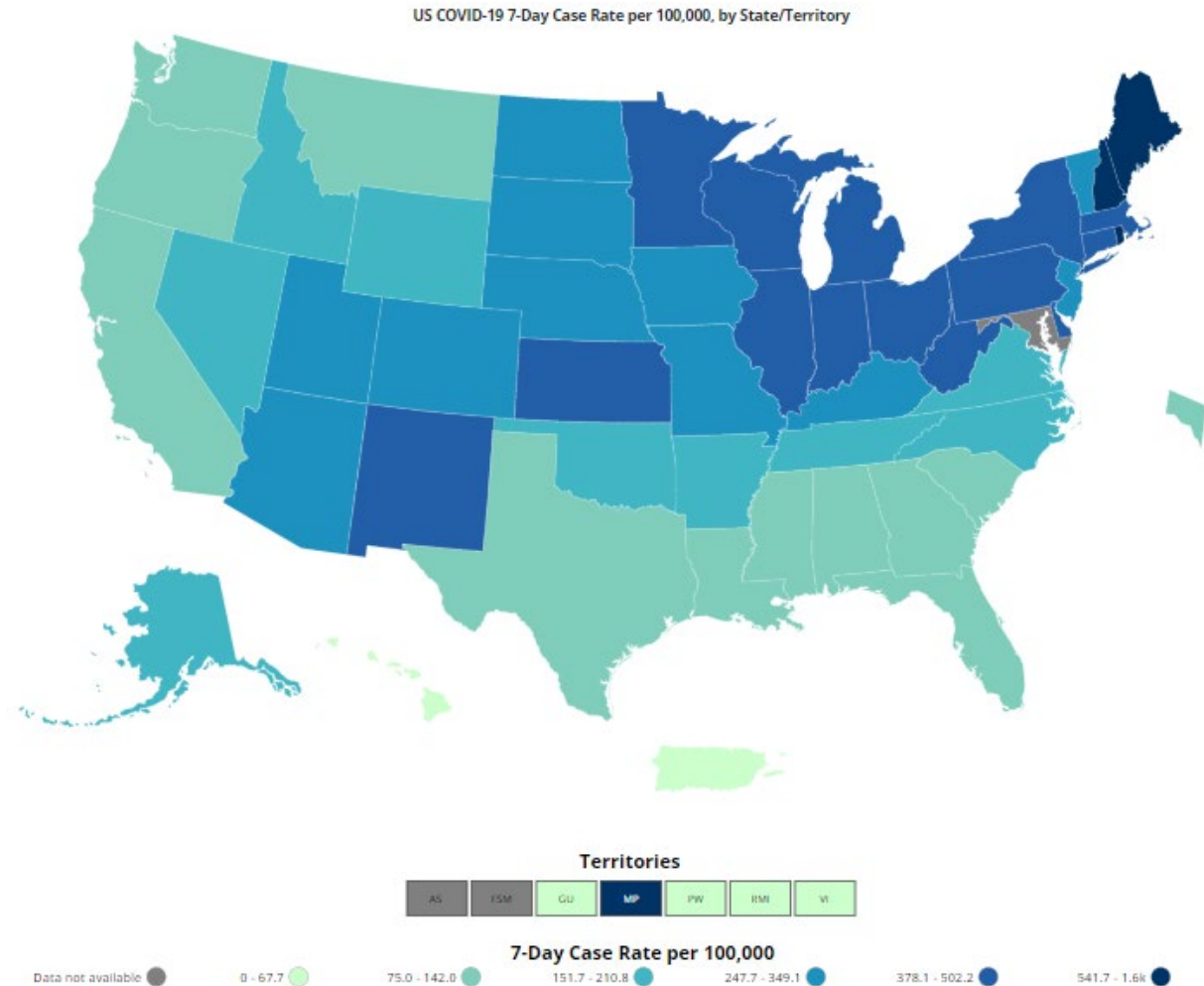
Daily Trends in Number of COVID-19 Cases in The United States Reported to CDC



COVID-19 Cases – United States

December 14, 2021

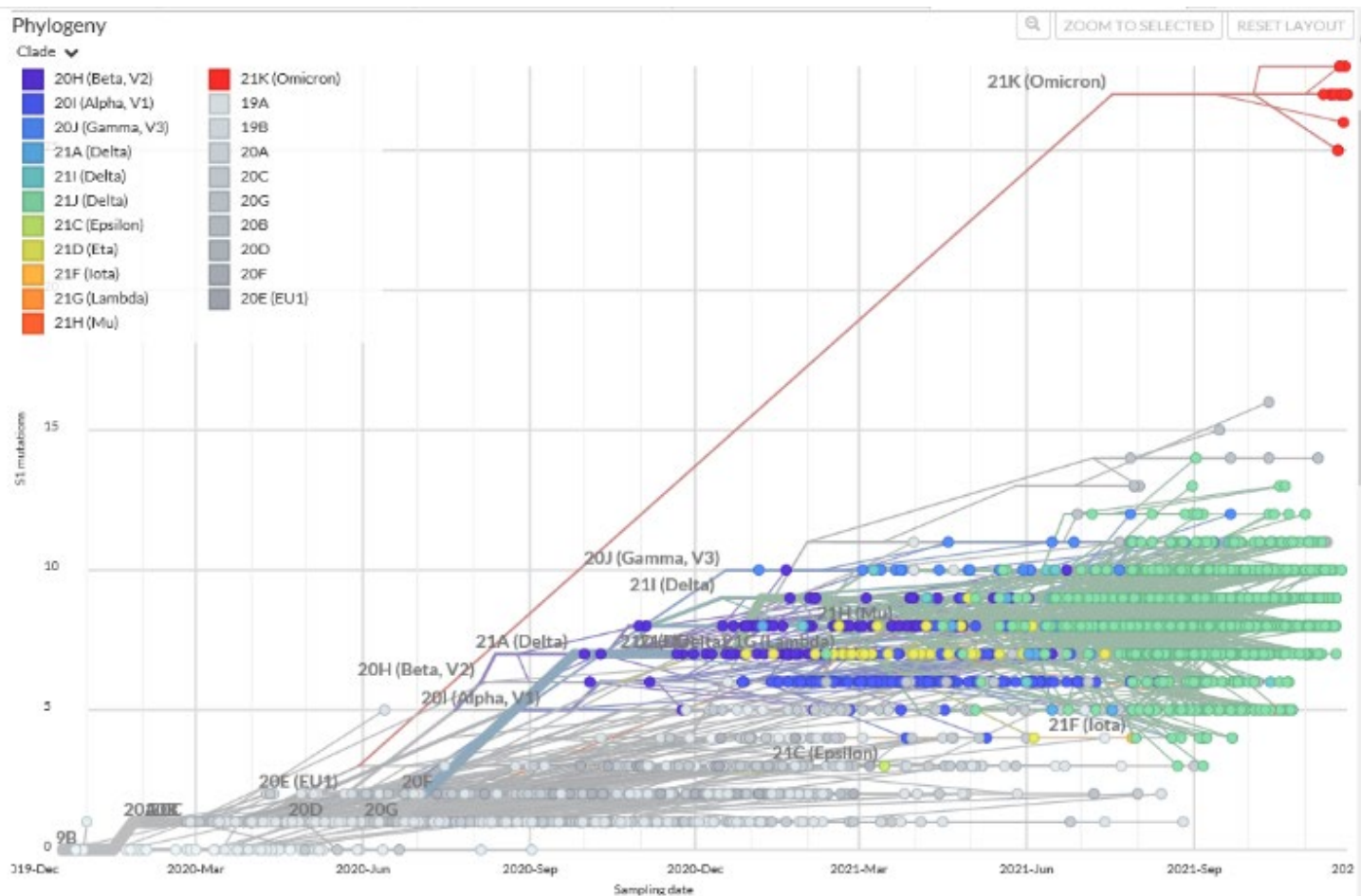
This map shows the number of COVID-19 cases for every 100,000 people over the last 7 days, allowing you to compare areas with different population sizes.



https://covid.cdc.gov/covid-data-tracker/#cases_casesper100klast7days

In the News: Omicron Variant

- WHO designated variant B.1.1.529 (Omicron) as a “variant of concern” on 11/26/21.
- Omicron is a highly divergent variant with a high number of mutations, including 26-32 in the spike, some of which are concerning and may be associated with immune escape potential and higher transmissibility.



Omicron – Locations of Detection

December 14, 2021

Map of tracked variant occurrence

Circle size proportional to number of variant genomes, zoom into region for more detail. Color by recency with red being most recent.



Omicron: What We Know

Data as reported by 3:00pm ET.

What We Know about Omicron

Infection and Spread

- **How easily does Omicron spread?** The Omicron variant likely will spread more easily than the original SARS-CoV-2 virus and how easily Omicron spreads compared to Delta remains unknown. CDC expects that anyone with Omicron infection can spread the virus to others, even if they are vaccinated or don't have symptoms.
- **Will Omicron cause more severe illness?** More data are needed to know if Omicron infections, and especially reinfections and breakthrough infections in people who are fully vaccinated, cause more severe illness or death than infection with other variants.
- **Will vaccines work against Omicron?** Current vaccines are expected to protect against severe illness, hospitalizations, and deaths due to infection with the Omicron variant. However, [breakthrough infections](#) in people who are fully vaccinated are likely to occur. With other variants, like Delta, vaccines have remained effective at preventing severe illness, hospitalizations, and death. The recent emergence of Omicron further emphasizes the importance of vaccination and boosters.
- **Will treatments work against Omicron?** Scientists are working to determine how well existing treatments for COVID-19 work. Based on the changed genetic make-up of Omicron, some treatments are likely to remain effective while others may be less effective.

<https://www.cdc.gov/coronavirus/2019-ncov/variants/omicron-variant.html>

Omicron Variant: What Can We Do?

What's being done to slow the spread of the Omicron variant in the US?



Detect variants

Robust surveillance to rapidly detect variants



Slow spread from international travel

Decrease window for required testing before travel to US; increase testing after arrival



Slow domestic spread

Prioritize case investigation and contact tracing



Support individual protective actions

Vaccination including boosters, masks indoors and in crowds, testing & isolation



bit.ly/MMWR7050e1

MMWR

https://www.cdc.gov/mmwr/volumes/70/wr/mm7050e1.htm?s_cid=mm7050e1_w

Over-the-Counter (OTC) Test Kits: More Resources



- Convenient, self-administered, easy to use.
- No contact tracing on positive results from over-the-counter tests.
- Reporting over-the-counter test results to DPH is not currently required.
- You can still call Public Health Contact Tracing at 907-531-3329 for questions, education, and resources

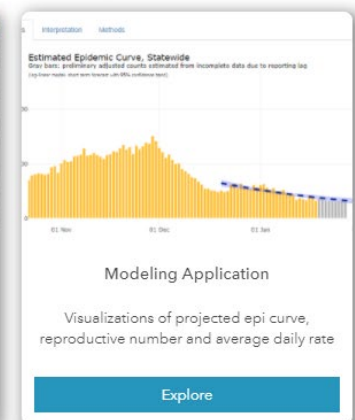
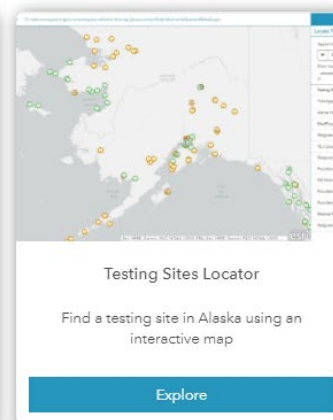
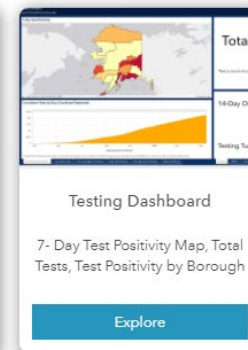
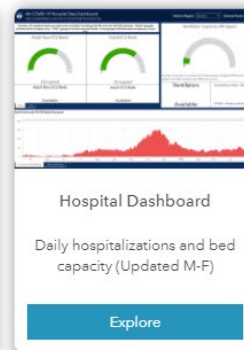
<https://dhss.alaska.gov/dph/epi/id/pages/covid-19/testing.aspx>

https://dhss.alaska.gov/dph/epi/id/siteassets/pages/humanCOV/flyer_athometesting.pdf

Dashboard Changes

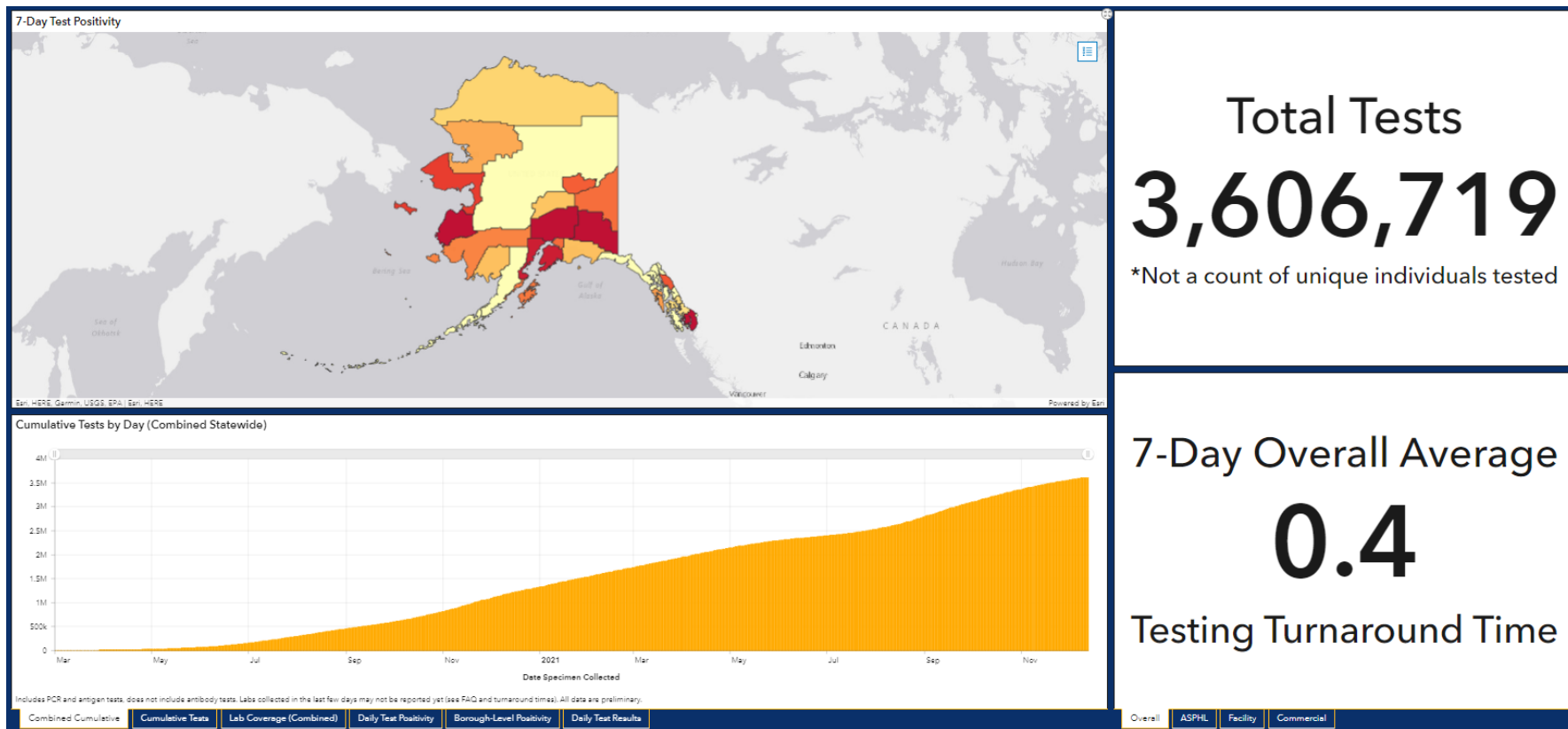
- Starting December 6, 2021, DHSS returned to three times weekly (Monday, Wednesday and Friday) data updates for the cases, testing and vaccine dashboards.
- Our COVID-19 summary email matches those updates and publish three times weekly.
- Focus will be on weekly and monthly data, which are more helpful for understanding trends.
- Moving toward weekly and monthly data.

Click explore below for detailed COVID-19 Dashboards



<https://alaska-coronavirus-vaccine-outreach-alaska-dhss.hub.arcgis.com/>

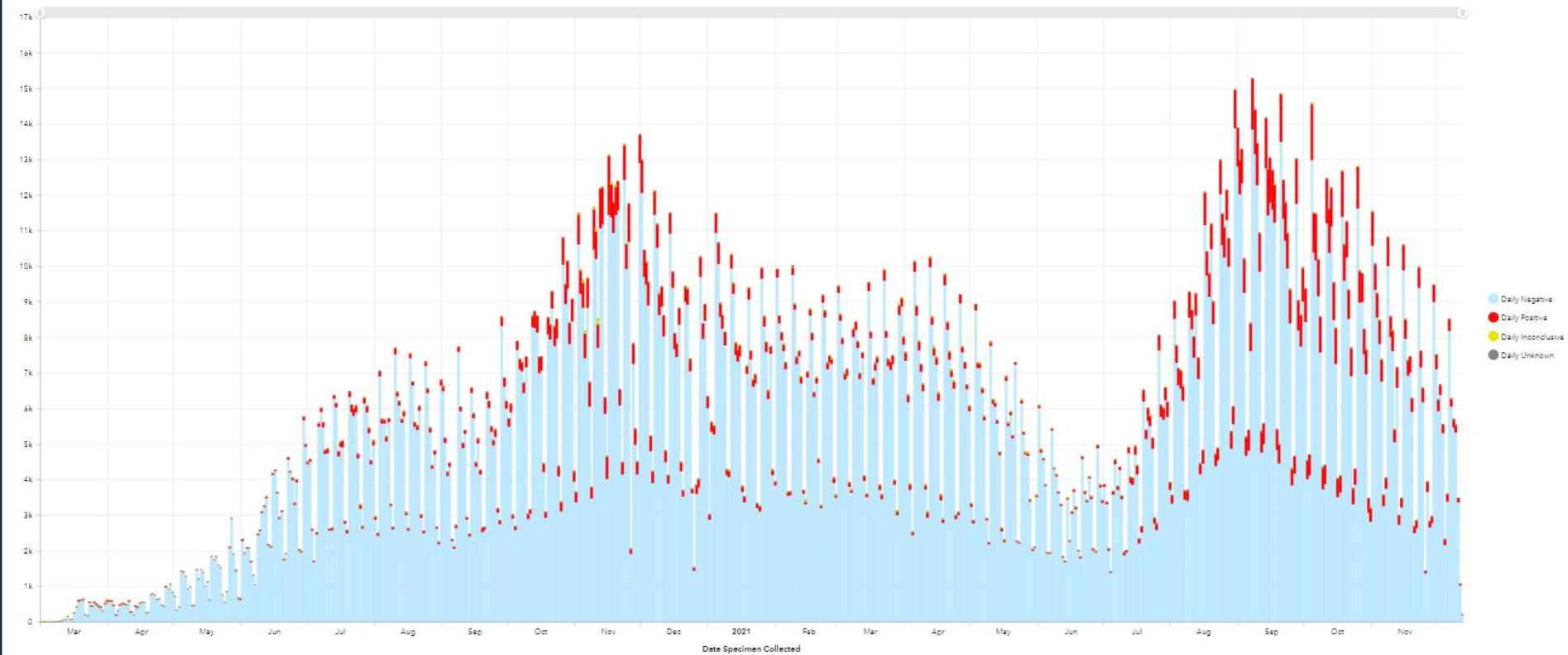
Current Testing Dashboard



<https://experience.arcgis.com/experience/87fbb9b8619648389be49ef4b677a756/>

Daily Test Results

Statewide Daily Tests Results



Includes PCR and antigen tests, does not include antibody tests. Labs collected in the last few days may not be reported yet (see FAQ and turnaround times). All data are preliminary.

[Combined Cumulative](#) [Cumulative Tests](#) [Lab Coverage \(Combined\)](#) [Daily Test Positivity](#) [Borough-Level Positivity](#) [Daily Test Results](#)

<https://experience.arcgis.com/experience/87fbb9b8619648389be49ef4b677a756/>

Improvements to Weekly Report

IDEAS FOR CHANGES

- Include flu data
- Key findings/stronger
- Bookmarks to find key sections easily
- Syndromic surveillance
- Hospital capacity
- Plainer language for a general audience while still providing information for COVID response



Alaska Department of Health & Social Services Weekly Case Update
November 28 — December 4, 2021

RO (Reproduction Number) Statewide transmission R_t 0.84	HIGH Statewide alert status 235.3	LIMITED Hospital capacity	INTERMEDIATE Test positivity 4.84%	62% of Alaskans aged 5+ are vaccinated
Red- $R_t > 1.2$ Orange- R_t 1-1.2 Yellow- $R_t < 1$	7-day case rate per 100,000 population. Red- ≥ 100 Orange- 50-99.99 Yellow- 10-49.99 Blue- 0-9.99	Multiple facilities continue to have a high number of inpatients, which results in delays in admitting patients from emergency departments as well as other operational challenges.	Red- $> 5\%$ Orange- 2-5% Yellow- $< 2\%$	This includes people with at least one dose. Estimated AK population 5 and older of 680,580 from the AK Department of Labor & Workforce Development.

<https://dhss.alaska.gov/dph/Epi/id/Pages/COVID-19/weeklyupdate.aspx>

Improvements to Monthly Report

IDEAS FOR CHANGES

- Webpage that provides a plain language executive summary
- Several key infographics linked to dashboard
- More data visualization



COVID-19 Update

Hospitalizations, Deaths, Repeat and Vaccine Breakthrough Infections

Through October 2021

The Section of Epidemiology, Alaska Division of Public Health

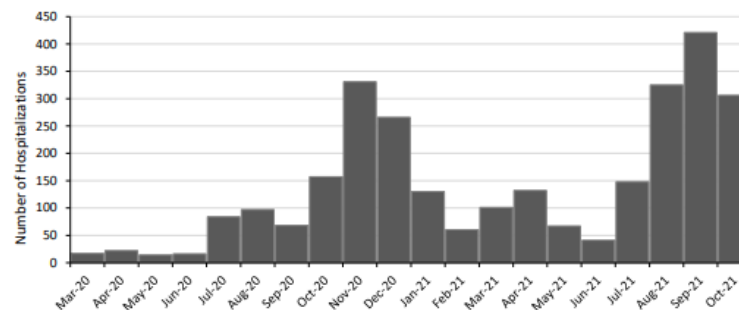
Introduction

This document is intended to provide routine updates on COVID-19 hospitalizations, deaths, repeat, and vaccine breakthrough infections in Alaska. Hospitalization and death data are those displayed on the [Alaska Cases Dashboard](#). Vaccine breakthrough infections and multisystem inflammatory syndrome in children (MIS-C) statistics are produced with additional data collected by the Section of Epidemiology (SOE). This report is not designed to track the burden of COVID-19 on hospitals; other data sources, such as HHS Protect or facility-level statistics may be more appropriate for those questions. It is likely that some hospitalizations are missing from these data, particularly more recent events. Data included are not final; efforts to increase completion and ensure data quality are ongoing and these numbers will change. Additionally, more detailed summaries and reports will be produced in the future. Data are for cases from March 2020 through October 2021.

Hospitalizations

SOE removes hospitalizations that are not due to COVID-19; for example, asymptomatic behavioral health patients or laboring mothers tested on admission are excluded. A total of 2,801 COVID-19 hospitalizations with a known admission date among Alaska residents were included in this analysis (Figure 1). For people with multiple admissions, the most severe/longer admission was counted.

Figure 1. COVID-19 hospital admissions among Alaska residents, by month of admission — March 2020 through October 2021



Have a Healthy, Happy and Safe Holiday Season!

